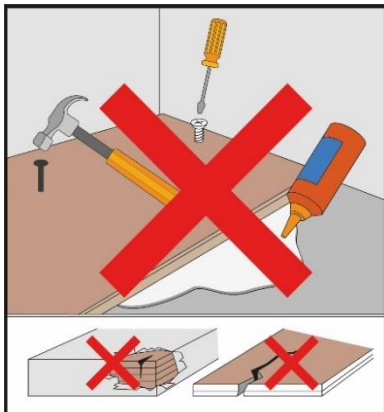


## LAYING INSTRUCTION – LOC-CLICK

For the processing of vinyl floor coverings, the award and contract regulations for construction services (VOB), Part C, DIN 18365 (Germany) or the respectively valid standards for floor covering work, the generally recognised rules of the trade and the state of the art must be observed.

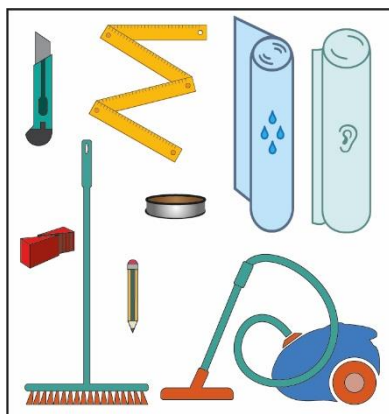
Before beginning installation of the flooring you must read the below instructions and follow throughout the installation process.

### PREPARATION



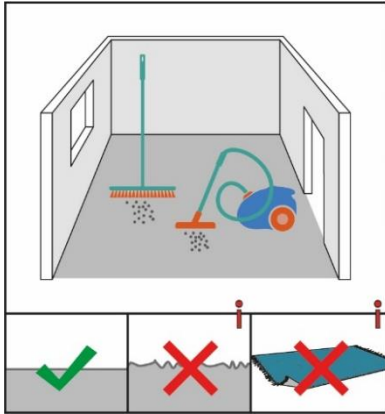
Despite regular quality controls, material defects can't be completely ruled out. Therefore, before installation our floor coverings must be thoroughly checked for batch equality (optical equality) and defects or damage. Recognisable defects can no longer be rectified after installation or cutting.

**Note that the floor covering must not be screwed, glued or nailed.**



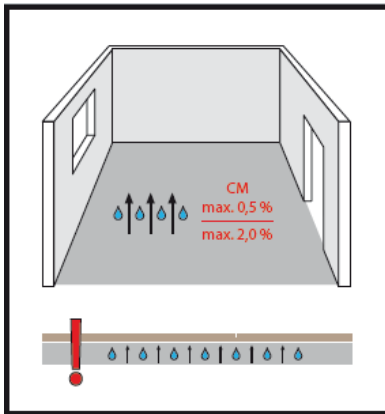
We recommend the use of the following tools for installation:

- Folding rule, pencil, drawing square, cutter
- broom / vacuum cleaner
- wall spacer
- Underlay  
(if the product does not contain an integrated underlay)
- Vapor barrier and alu tape  
(for CHECK comfort with integrated cork underlay)



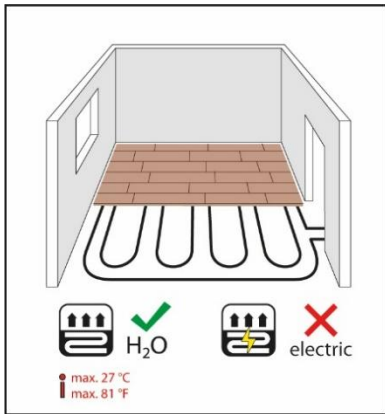
The substrate must be crack-free, clean, tension/compression resistant and completely dry (VOB, Part C, DIN 18365). Before laying, remove all old floor coverings from the subfloor as far as they may affect the evenness of the subfloor. The evenness of the substrate should not deviate by more than +/- 3mm on 1m (DIN 18202).

**If necessary, have the subfloor checked by a floor layer.**



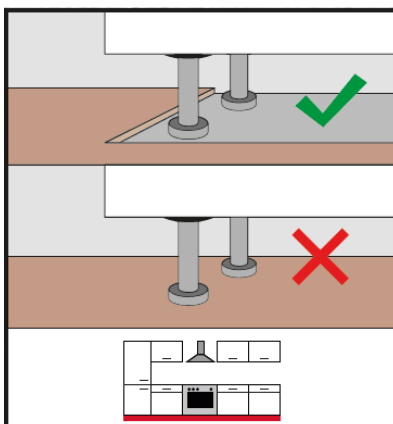
Check the humidity of the subfloor. The maximum permissible humidity for cement screed is 2.0%, for underfloor heating 1.8%. For anhydrite (calcium sulphate) screeds the maximum residual moisture is 0.5%, for underfloor heating max. 0.3%.

**For protection against rising damp, do not forget to use a vapour barrier for the product “CHECK comfort with integrated corkunderlay”.**

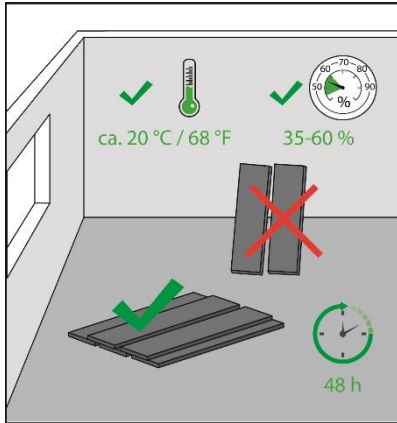


When laying on warm water underfloor heating systems, the screed must be produced in accordance with DIN18353 and heated to the required thickness (DIN EN1264 and DIN4725). The temperature on the surface of the flooring must not exceed 27°C.

**Note: The floor covering is not suitable for electric underfloor heating.**

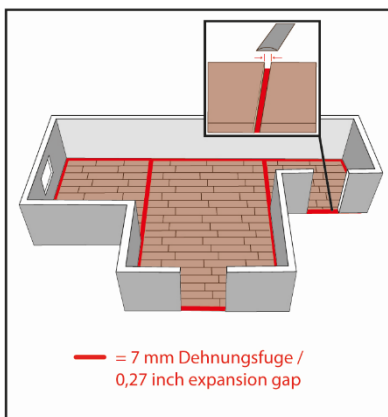


Do not install heavy furniture, built-in units, or fixed appliances (e.g. kitchen cabinets, ovens, refrigerators, washing machines) on the finished floor, as this may prevent the floor from expanding and moving freely. Install such items before laying the floor.



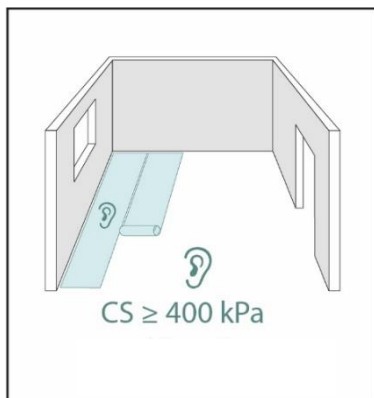
Note that the packages should never be stored upright, they should lie flat on the floor surface. Please note that typical living room temperatures must prevail throughout the year (VOB, Part C, DIN 18365, DIN EN1264, DIN 4725). The room air temperature should be approx. 20°C, the relative humidity should be between 35-60%.

The above-mentioned room climate must be maintained for at least 48 hours before, during and after the installation of the flooring.



Before laying, you should plan for expansion or movement joints. Installation areas up to approximately 8 m in width and 8 m in length are generally considered suitable for installation. Please be sure to follow the installation instructions below: All transitions to rooms or other floor coverings should be fitted with an expansion joint of at least 7 mm width. The same applies to larger areas, angled rooms, immovable components and areas such as walls, columns, door frames, stairs and heating pipes. If the substrate (e.g. screed) already has an expansion joint, you must also make an expansion joint in the vinyl floor at this point. **If the expansion or movement joint is omitted, the installer is liable.**

**omitted, the installer is liable.**

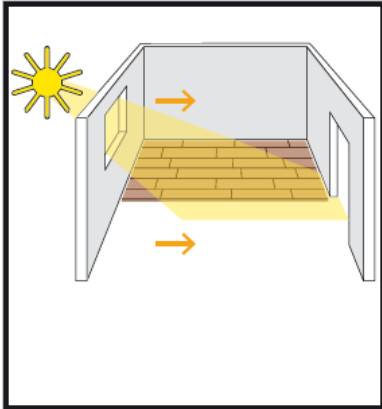


The use of a suitable impact sound insulation for vinyl floors is necessary. Please use an impact sound insulation with a pressure load of min. 400 kPa.

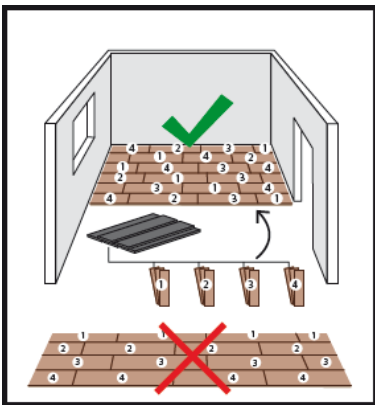
**If the installation requires it, do not forget to use a vapour barrier.**

Do not use a separate impact sound insulation if the product already has an integrated underlay.

## INSTALLATION

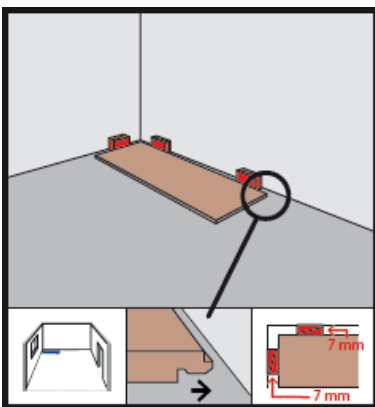


Lay the boards lengthwise to the main light source and thus towards the incoming light. The boards should be installed/laid from left to right. The boards must be floating.



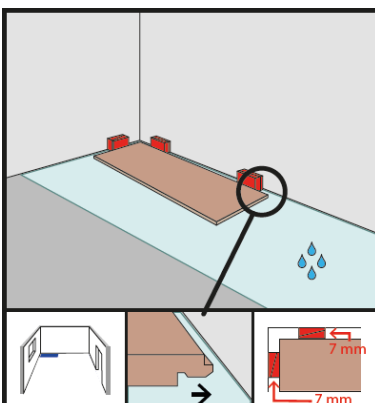
Before laying, check each individual board for colour and structure. It is advisable to mix several packages in order to obtain a uniform laying / sorting pattern. **Note: Only use material from the same batch in a room.**

Measure the space thoroughly beforehand. The length of the first panel may have to be adjusted to avoid a piece smaller than 30 cm. If necessary, the panels in the first row must also be shortened in width so that the last row does not become too narrow (at least 5 - 8 cm) (formula: length of the area to be laid: the panel width).

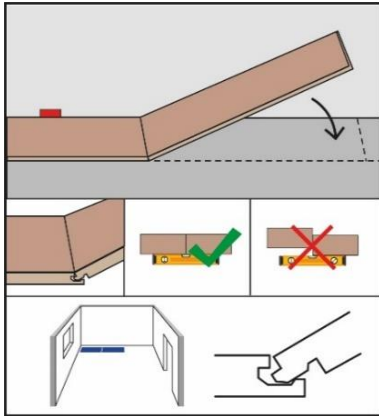


The first row is laid so that the spring of the head and long side faces the wall. Fix the first row with spacers (min. 7 mm) to the wall.

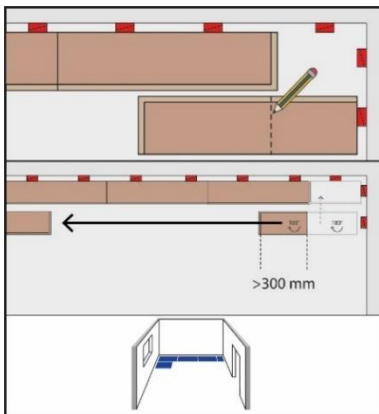
Measure the space thoroughly beforehand. The length of the first panel may have to be adjusted to avoid a piece smaller than 30 cm. If necessary, the panels in the first row must also be shortened in width so that the last row does not become too narrow (at least 5 - 8 cm) (formula: length of the area to be laid: the panel width).



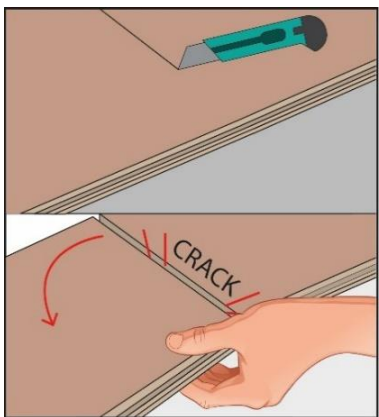
**NOTE FOR CHECK COMFORT:** If you install CHECK comfort with integrated cork underlay on a screed floor, please remember the vapor barrier. Please fix the vapor barrier in advance with an AluTape.



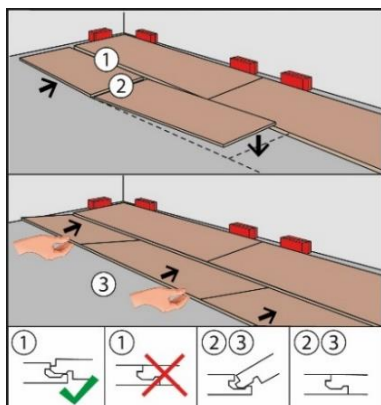
Click the front side of the panels into the previous panel at a slight angle. Make sure that the panels are absolutely flush with each other.



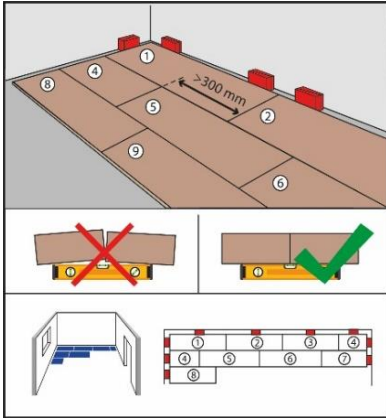
Start the next row with the remaining piece of flooring from the previous row. However, remnants should be at least 30cm long to ensure optimum stability.



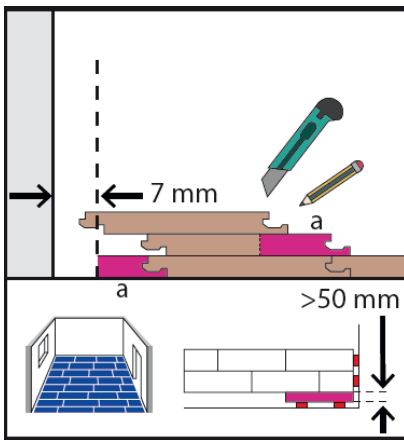
The custom-made panels are easily shortened with an angle and a carpet knife. The panel is then "broken over the edge".



Insert the second row in the same way as the first: Place the first panel of the second row in such a way that the tongue of the head and long side faces the first row. Then insert the second panel on the head side by clicking the tongue of the second panel into the groove of the first panel. Continue until the second row is complete. Then connect the second row to the first row by clicking the tongue of the second row into the groove of the first row. To do this, slightly angle the entire row and click it in completely. Make sure that the head ends do not come loose.

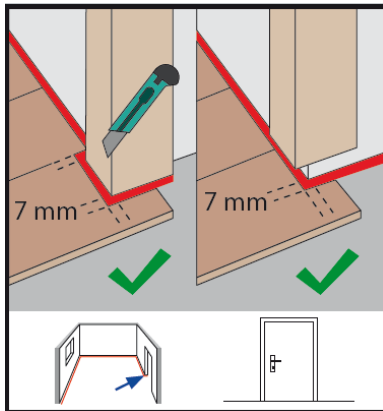


Proceed in the same way when inserting the next rows. Make sure that the boards are absolutely flush with each other. Make sure that the offset of the head joints from row to row is at least 30 cm.

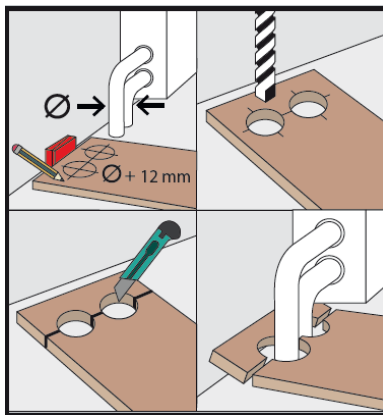


To install the last row of panels, you must also shorten the width (see picture on the left). **Pay attention to the expansion joint.**

## SPECIALS



Wooden door frames can be shortened. Place a panel with the decor side down against the frame. Now shorten the door frame with a suitable saw along the panel. Then simply slide the panels under the door frame with the decor side up. In the case of door frames that cannot be shortened, cut the panel to size accordingly and observe the minimum 7mm circumferential distance for the expansion joints.



Where, for example, heating pipes protrude from the floor, please first cut the panel to the correct length, then place the panel piece next to the actual slot and measure and mark the cut-outs with a tape measure. Please always keep in mind the minimum distance of 7 mm for the expansion joint. Now you can drill out the marked areas and saw the panel to size. Then place it behind the heating pipe and join it tightly with the panel.