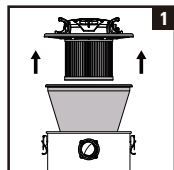


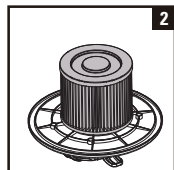
CARTRIDGE FILTER GUIDE

⚠ Never operate the vacuum without filters installed.

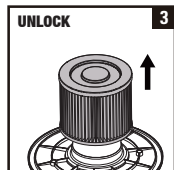
CLEANING



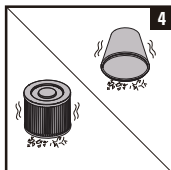
1 Remove the power head and pre-filter.



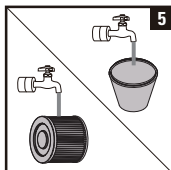
2 Turn the power head upside down.



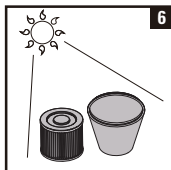
3 Pull the filter from the power head.



4 Shake or brush off excess dirt.

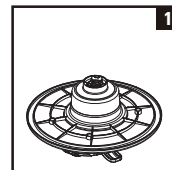


5 Or rinse (from the inside of the filter) with water.

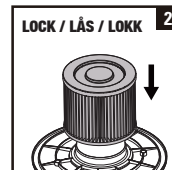


6 Dry completely (approximately 24 hours), and reinstall.

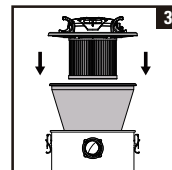
INSTALLATION



1 Turn the power head upside down.



2 Push the filter seals against the power head.



3 Replace the pre-filter and power head.

⚠ WARNING: Always disconnect the plug from the wall outlet before removing the tank cover.

⚠ WARNING: To reduce the risk of injury, user must read instruction manual before operating product.

NOTE:

1. The cartridge filter is factory assembled.

2. Accessories included are subject to different models.

Please refer to the manual for accessories that are included.

To order replacement bag,
filters or parts contact:
www.altonindustries.com



OR SCAN